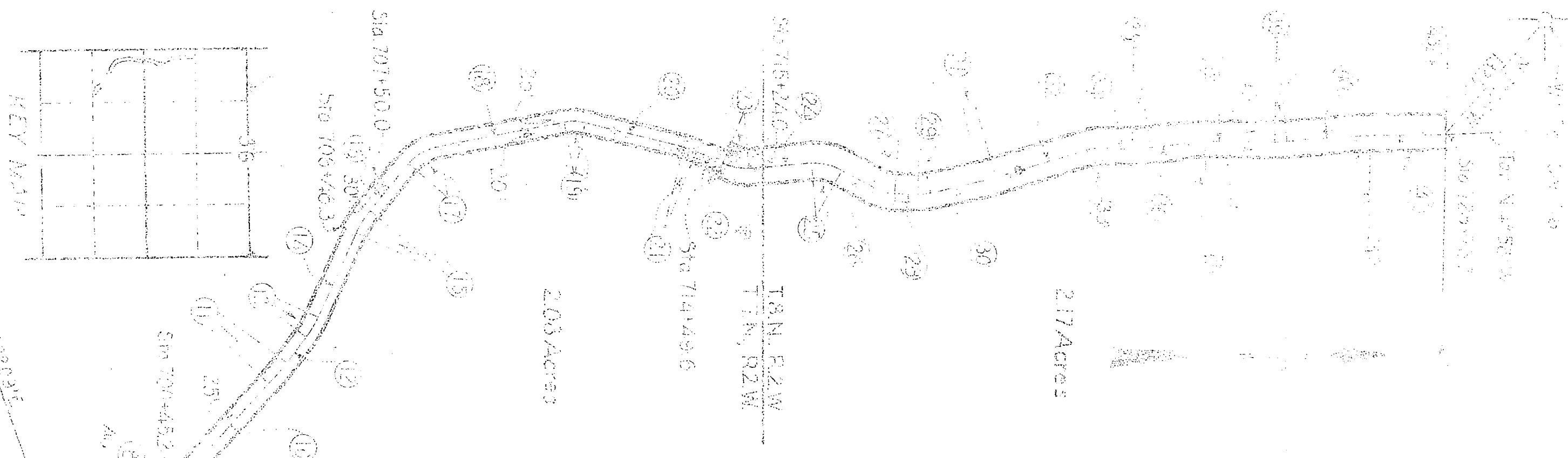


1	N 21° 24' W	64.3	0° 03' 58" E	18° 18' E
2	N 16° 54' W	54.7		
3	N 9° 58' W	30.4		
4	S 16° 26' 15" W	21.1	1° 01' 30" E	52° R
5	S 10° 55' 7" W	23.3		
6	N 52° 40' W	6.7		
7	N 45° 11' W	17.8		
8	S 0° 30' 7" W	11.6		
9	S 10° 33' 10" W	24.1		
10	N 14° 16' W	19.6		
11	N 21° 4' W	26.3		
12	N 21° 4' W	26.2		
13	N 6° 3' W	12.0		
14	N 26° 3' E	61.3	100° 31' 35" E	8° E
15	N 26° 3' E	64.0		
16	N 0° 26' E	48.6		
17	N 0° 26' E	48.6		
18	N 14° 08' W	25.5		
19	N 14° 08' W	25.9		
20	N 18° 5' W	35.0		
21	N 18° 5' W	35.7		
22	N 0° 05' E	58.0		
23	N 10° 13' W	38.0		
24	N 10° 13' W	38.4		
25	N 0° 42' W	33.8		
26	N 5° 02' W	13.7		
27	N 5° 02' W	13.4		
28	N 0° 57' W	2.7		
29	N 0° 57' W	10.2		
30	N 0° 57' W	10.2		
31	N 20° 52' W	2.2		
32	N 20° 52' W	506.0	21.3	4° 50' E

CHARLES A MAGUIRE  
 A PART OF NW<sup>4</sup> NW<sup>4</sup> SEC 1  
 T7N, R2W, S1M  
 A PART OF SW<sup>4</sup> SW<sup>4</sup> SEC 20  
 T8N, R2W, S1M  
 Total 425 ACRES



DEPARTMENT OF THE INTERIOR  
 BUREAU OF RECLAMATION  
 GOLDEN RIVER PROJECT - UTAH  
 RIGHTS OF WAY  
 GOLDEN BRIGHAM CANAL

DRAWN: CMA SUBMITTED:  
 CHECKED: EWR APPROVED:  
 TRACED: PFR  
 44-D-167 Proven, Utah 123-35

Scale 1 in = 200 ft